

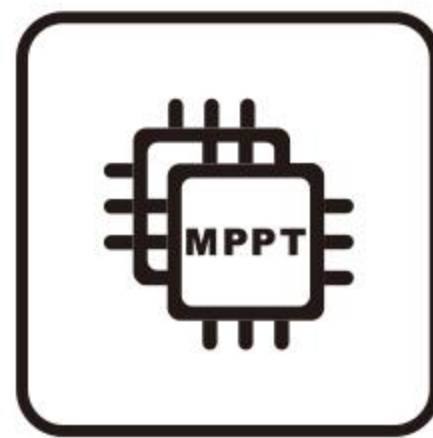


OFF GRID HYBRID INVERTER

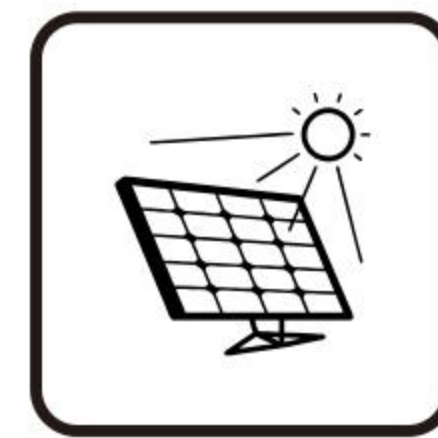
GT-3600W/3600VA Axpert



Output
Multiple Priority



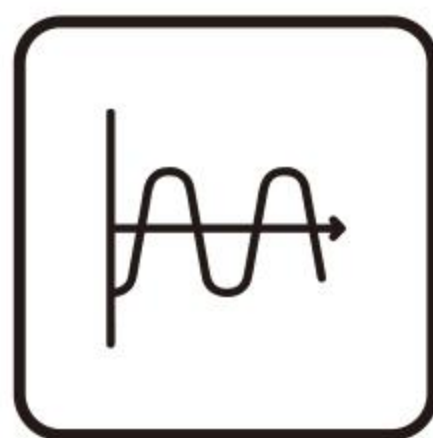
MPPT



PV 30-500Vdc



Anti-shock
design terminal



Pure sine wave



WiFi optional

Features

- Pure Sine Wave
- PV Input 500Vdc Max
- Built-in MPPT 100A
- Lithium battery activation by PV
- Detachable dust cover for harsh environment
- Wifi remote monitoring optional
- Support multiple output priority: UTL, SOL, SBU, SUB
- EQ function to optimize battery performance and extend lifecycle

Technical Data



MODEL	GT-3600W/3600VA Axpert
Capacity	3600VA/3600W
Parallel Capability	NO
Lithium Battery Activation	YES
INPUT	
Nominal Voltage	230VAC
Acceptable Voltage Range	170-280VAC(For personal Computer);90-280VAC(For Home Appliances)
Frequency	50/60 Hz (Auto sensing)
OUTPUT	
Nominal Voltage	220/230VAC±5%
Surge Power	50/60 Hz
Frequency	Pure Sine wave
Waveform	10ms(For personal Computer);20ms(For Home Appliances)
Transfer Time	96%
Peak Efficiency (PV to INV)	93%
Peak Efficiency (Battery to INV)	5s@ > =140% load; 10s@100%~140% load
Overload Protection	3:1
Crest Factor	0.6~1 (inductive or capacitive)
Admissible Power Factor	7000VA
BATTERY	
Battery Voltage	24Vdc
Floating Charge Voltage	27Vdc
OverCharge Protection	32Vdc
Charging Method	CC/CV
SOLAR CHARGER & AC CHARGER	
Solar Charger TYPE	MPPT
Max.PV Array Power	4000W
Max. PV Array Open Circuit Voltage	500Vdc
PV Array MPPT Voltage Range	30Vdc-500Vdc
Max. Solar Input Current	15A
Max. Solar Charge Current	100A
Max. AC Charge Current	60A
Max. Charge Current(AC+PV)	100A
PHYSICAL	
Dimensions, D x W x H(mm)	338*310*100
Package Dimensions, D x W x H(mm)	402x368x174mm
Net Weight (Kgs)	4.4
Communication Interface	RJ45 For WiFi
ENVIRONMENT	
Operating Temperature Range	-10°C to 55°C
Storage temperature	-15°C~ 60°C
Humidity	5% to 95% Relative Humidity (Non-condensing)

*Product specifications are subject to change without further notice.